

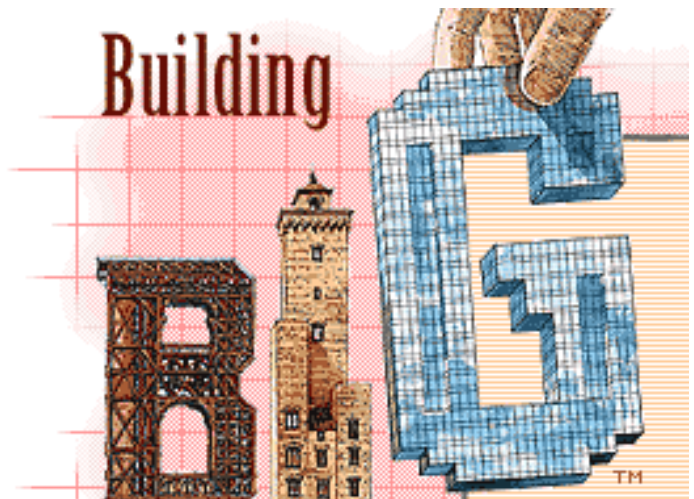
School of Engineering

CHRISTIAN BROTHERS UNIVERSITY

News - October 2000

BUILDING BIG

The School of Engineering proudly sponsors in part [Building Big](#) on WKNO-TV Channel 10. This is a new five-part series exploring the world's greatest engineering feats including bridges, domes, skyscrapers, dams, and tunnels. Watch the series at the nearest PBS station on Tuesdays, October 3, 2000 - October 31, 2000, 8 p.m. EST or 7 p.m. CST.



CBU 5K CLASSIC

Announcing the 3rd Annual CBU 5K Classic! Confused? We have renamed the former Big Buc Classic to the CBU 5K Classic. We hope to include more current and past CBU students this year. The CBU 5K Classic was started five years ago by **Eric Criswell** (engineer at Allen & Hoshall) to raise funds for the student ASCE chapter and the Madonna Learning Center. Since then, it has also benefited the AIChE organization on campus. Next year we hope to include more engineering organizations on campus and possibly the whole engineering school. In order for this to happen we need to get your support. This year, we hope to have our biggest turnout ever, and we want that trend to continue. If you have never come to the Classic, make this year the first year of many. For race information, please contact either **Chris Owen** at 722-8782, or email at CBU5KClassic@aol.com, or check out the race web page at <http://www.cbu.edu/Clubs/ASCE>. Come and run! Come have fun! We hope to see you there.



THANKS



Thanks to the **Engineers' Club of Memphis** for a recent contribution to the Proutt Memorial Scholarship Endowment Fund. The Club started the fund last year ([October 1999](#) issue of the engineering newsletter). This scholarship is for junior and senior students majoring in engineering.

Thomas & Betts recently donated various pieces of equipment to the Mechanical Engineering Department. These include high power pulse generator, ground continuity test set, in-circuit FET and transistor tester, tracer, capacitor, bridge, lock-in amplifier for fiber optic, oscilloscope, semiconductor tester, cycling controller, graphics plotter, oscillator, vacuum pump, single phase AC motor, and right angle gear drive. Thanks!

Thanks to the following engineers and faculty who spoke to students in the Early Identification Program this past summer: **Quinton Clark** (EE '93) of MLGW; **Brian McGinnon** of Smith + Nephew; **Dr. Jerry Huff**, **Eva Woo**, and **Bernard Hill** of Buckeye Technologies; **Steve Kinley** of PSI; **Dr. Eric Welch**, **Dr. Mike Santi**, **Dr. Henry Luttrell**, and **Dr. Siripong Malasri** of CBU. **Andrea Webster**, CBU student, also spoke with the group on student life. Also, thanks to **VP Buildings**, **Buckman Labs**, **Smith+Nephew**, and **WorldCom** for arranging field trips for students in the program. The program would not be possible without the following director and instructors: **Denise Theobald-Roberts** (Program Director), **Gene McGinnis**, **John Ventura**, **Dr. Paul Shiue**, and **Bill Summons**. Also thanks to the **Athletic Department** for providing field trip transportation and the **CBU Bookstore** for giving special discounts on gifts for students and the keynote speaker. **D. John Jackson** (EE'86) of FedEx was the keynote speaker. As mentioned in the [September 2000](#) issue of the newsletter, the **International Paper Foundation** provided part of the program funding. Thanks!

STUDENT NEWS

Congratulations to **Oliver Lam** (ME) for being recognized as CBU's Outstanding Junior Mechanical Engineering Student by the American Society of Heating, Refrigeration, and Air Conditioning Engineers (ASHRAE).



Oliver Lam (Left) and Mr. Anderson from ASHRAE

ALUMNI NEWS

Congratulations to **Edward Belk** (MEM '91) for his recent promotion to a GS-14 position entitled "Assistant Deputy for Project Management and Assistant Chief" for the Planning, Programs and Project Management Division at the Corps of Engineers (Memphis District).

Steve Schmidt (ME '00) and **Julie Brewer Schmidt** (CE '00) have been in St. Louis since March. Julie is a transportation EIT with Bucher Willis & Ratliff, which is based in Kansas City, MO. Steve is working for Killarck Electric designing lighting for hazardous conditions (coal mines, oil rigs, submarines, etc.).

Megan Olson (CE '00) is now at Pickering in Memphis. She starts out as a civil engineer and will eventually move into construction management.

Matthew Locke (CE '95) is now with International Comfort Products (ICP) in Lewisburg, TN. ICP manufactures five different brands of HVAC equipment for both residential and commercial uses. He is a sales associate for all commercial equipment. The company has one million square feet of manufacturing facility and a half million square feet of distribution center in Lewisburg. Matt lives in Nashville, TN.

Leo Old (ChE '93) now works at Smith Seckman Reid, Inc., in Nashville, TN. SSR is an engineering and information management consulting firm. He is a consultant with SSR, performing work in



the fields of fire protection, environmental health and safety, and facility management.

Matthew Zieg (CE '99) is working in Atlanta and in making plans for his wedding in December. At work, he is doing pure site development. He said, "Things could not be going any better for me right now. I really like the work and am having a great time."

Jonathan Pennington (CE '99) also plans to get married this November. He is currently with the Corp of Engineers (Memphis District).

Kim Parker (MEM '98) is currently a product manger for Tekelec in Raleigh, N.C. This was a big move for her from engineering into marketing. She and her husband, Carey, became proud parents to a baby girl, Sierra Marie Parker, on April 12th of this year. Kim said, "I continue to draw from the knowledge I gained throughout my masters in everything I do."

Randy Gangluff (CE '98) and **Alexandra Fisher** (CE '98) married on September 13th at St. Theresa's Catholic Church in Little Rock, Arkansas. Congratulations!

FACULTY NEWS

The following engineering faculty members serve on various boards of local engineering societies:



Dr. Fred Terry

- **Dr. Fred Terry** (ECE) - Council Member for the Memphis Joint Engineers Council, State Director for the Memphis Chapter of the Tennessee Society for Professional Engineers, and Board Member for the Engineers' Club of Memphis
- **Mr. John Ventura** (ECE) - Treasurer for the Memphis Chapter of the Tennessee Society of Professional Engineers
- **Mr. Gene McGinnis** (CEE) and **Dr. K. Madhavan** (CEE) - Board Member for the West TN Branch of the American Society of Civil Engineers
- **Dr. Neal Jackson** (MEM) - Board Member for the Greater Memphis Association for Quality